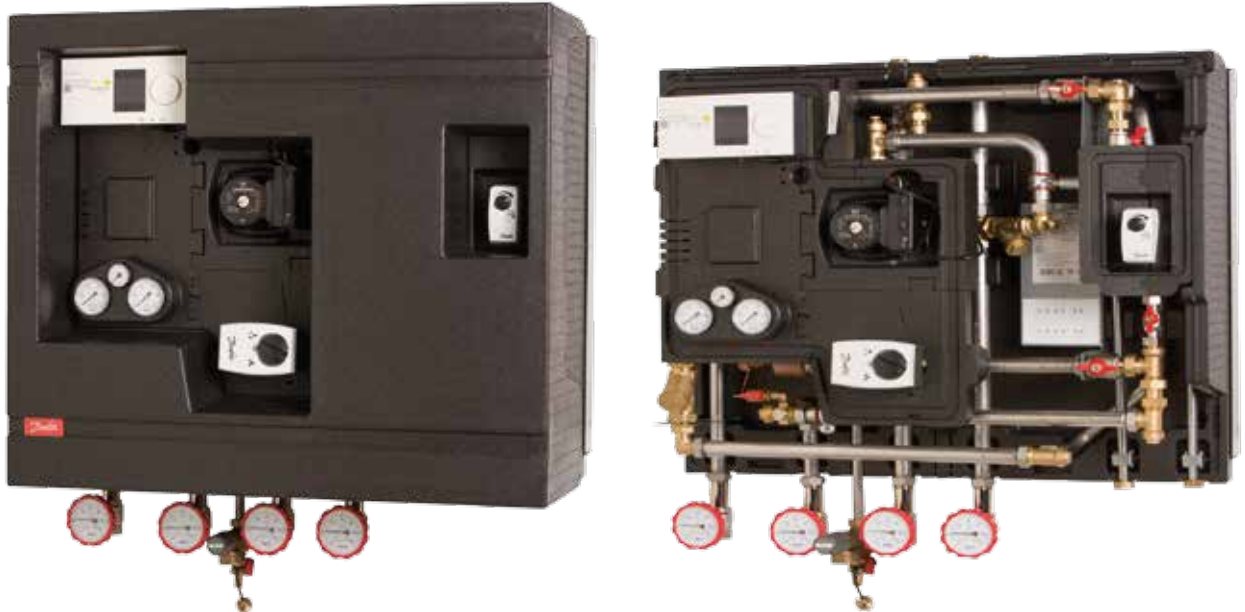


Fact sheet

Termix Compact 28 VX-FI

Ultimate solution for space heating.



Space heating

The Termix Compact 28 VX-FI is a heat exchanger unit for the production of heating in large buildings such as sports centres, schools, blocks of flats etc. It can be used for connection to indirect district heating in places where the district heating plant requires a hydraulic break on the plant side. It is also suitable for conversion to district heating when the secondary heating system is suitable to being connected to direct district heating or when a particularly effective security against leakage in the heating system is required. It is possible to connect a hot-water tank.

Efficient heat exchanger

The substation is fitted with an efficient plate heat exchanger, which ensures the most favourable heat extraction and achieves optimum comfort and operating economy.

Several variants

Termix Compact 28 VX-FI is built with a heat exchanger for space heating, flow controller¹, pump, electronic regulation of the heating circuit as well as a direct outlet for a hot water tank. The

electronic controller is factory pre-set. Electrical components are pre-wired, and the unit is equipped with a plug for 230 V a.c.

It is recommended that dynamic balancing valves are installed in the building's risers in the heat supply and on the heating system's return line immediately before the unit.

Termix Compact 28 VX-FI is produced in standard constructions:

- VX with heat exchanger for indirect heating
- VX with heat exchanger for indirect heating and integrated tank regulation

Flexible solution

Pipe connection can be made from either the top or bottom, which makes this solution highly flexible. At the same time, both space and time are saved when installing.

¹ AVQM = self-acting flow controller with integrated with integrated control valve

Minimal heat loss

Complete insulation of the unit ensures minimal heat loss.

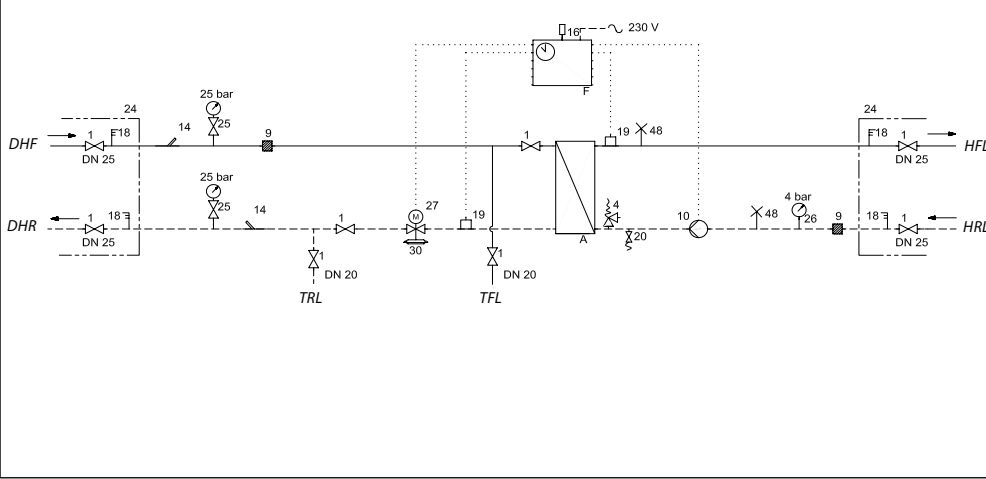
Reliable and easy to install

Termix Compact 28 VX-FI is operationally reliable. A quality product manufactured in Denmark, which is easy to install and quickly commissioned.

FEATURES AND BENEFITS

- Fully insulated
- Flexible connections
- Substations for apartment buildings
- Indirect heating
- Electronic control for heating and DHW
- Operates independently of differential pressure and flow temperature
- Pipes and plate heat exchanger made of stainless steel
- Intergated tank regulation (option)

CIRCUIT DIAGRAM - EXAMPLE

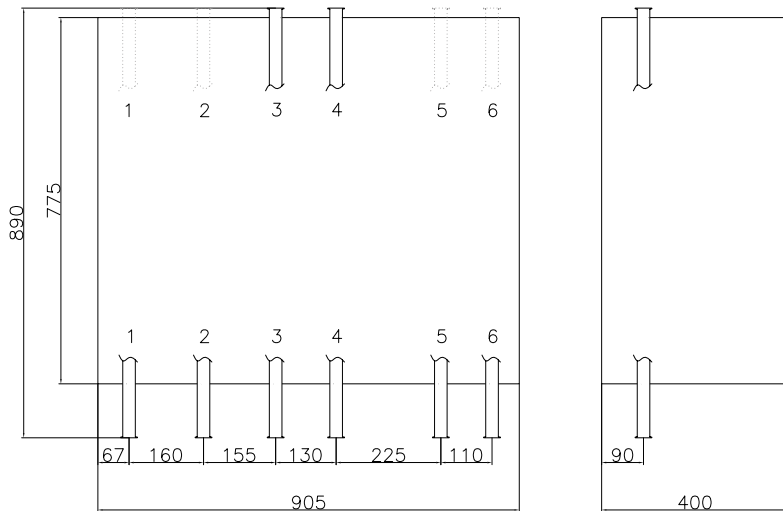


- A Heat exchanger
- F Automatic control
- 1 Shut-off valve
- 4 Safety valve
- 9 Dirt trap
- 10 Heating circulation pump
- 14 Sensor pocket single
- 16 Outdoor sensor
- 18 Thermometer
- 19 Attachable sensor
- 20 Drain/Fill Valve
- 24 Delivered loose with
- 25 Pressure gauge with ball valve
- 26 Pressure gauge
- 27 Motor
- 30 Motorized control valve with pressure differential
- 48 Bleed screw

Technical parameters:

Exchanger: Stainless steel AISI 316
 Test pressure exchanger: 25 bar
 Working pressure: 16 bar
 Valve type: Danfoss
 Operating temperature: Max. 110°C
 Soldering material: Copper
 Weight: 60 kg

Dimensions (mm):



Connections:

1. Primary flow line 1" RG int.
2. Primary return line 1" RG int.
3. Heating flow line 1" RG int.
4. Heating return line 1" RG int.
5. Tank flow line 3/4" RG int.
6. Tank return line 3/4" RG int.

Options:

Fitting piece for energy meter

HEATING: CAPACITY EXAMPLES

Substation type Termix Compact 28 VX-FI	Heating capacity [kW]	Heating circuit primary [°C]	Heating circuit secondary [°C]	Pressure loss primary *[kPa]	Flow rate primary [l/h]	Flow rate secondary [l/h]
VX 1	50	80/51	50/70	50	1531	2175
	60	100/61	60/80	50	1351	2620
	60	110/71	70/90	50	1357	2630
	85	90/41	40/70	50	1555	2456
VX 2	70	80/51	50/70	50	2131	3045
	70	100/61	60/80	50	1571	3056
	70	110/71	70/90	50	1578	3068
	105	90/41	40/70	50	1906	3034
VX 3	75	80/51	50/70	50	2257	3263
	75	100/61	60/80	50	1679	3275
	75	110/71	70/90	50	1688	3287
	115	90/41	40/70	50	2072	3323

*Heat meter not included.

Gemina Termix A/S · Member of the Danfoss Group · Navervej 15-17 · DK-7451 Sunds · Denmark

Tel.: +45 9714 1444 · Fax: +45 9714 1159 · mail@termix.dk · www.heating.danfoss.com

Danfoss can accept no responsibility for possible errors in catalogues, brochures and other printed material. Danfoss reserves the right to alter its products without notice. This also applies to products already on order provided that such alterations can be made without subsequent changes being necessary in specifications already agreed. All trademarks in this material are property of the respective companies. Danfoss and the Danfoss logotype are trademarks of Danfoss A/S. All rights reserved.